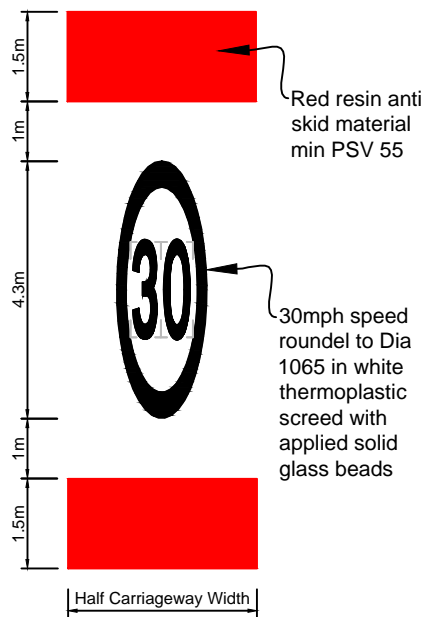
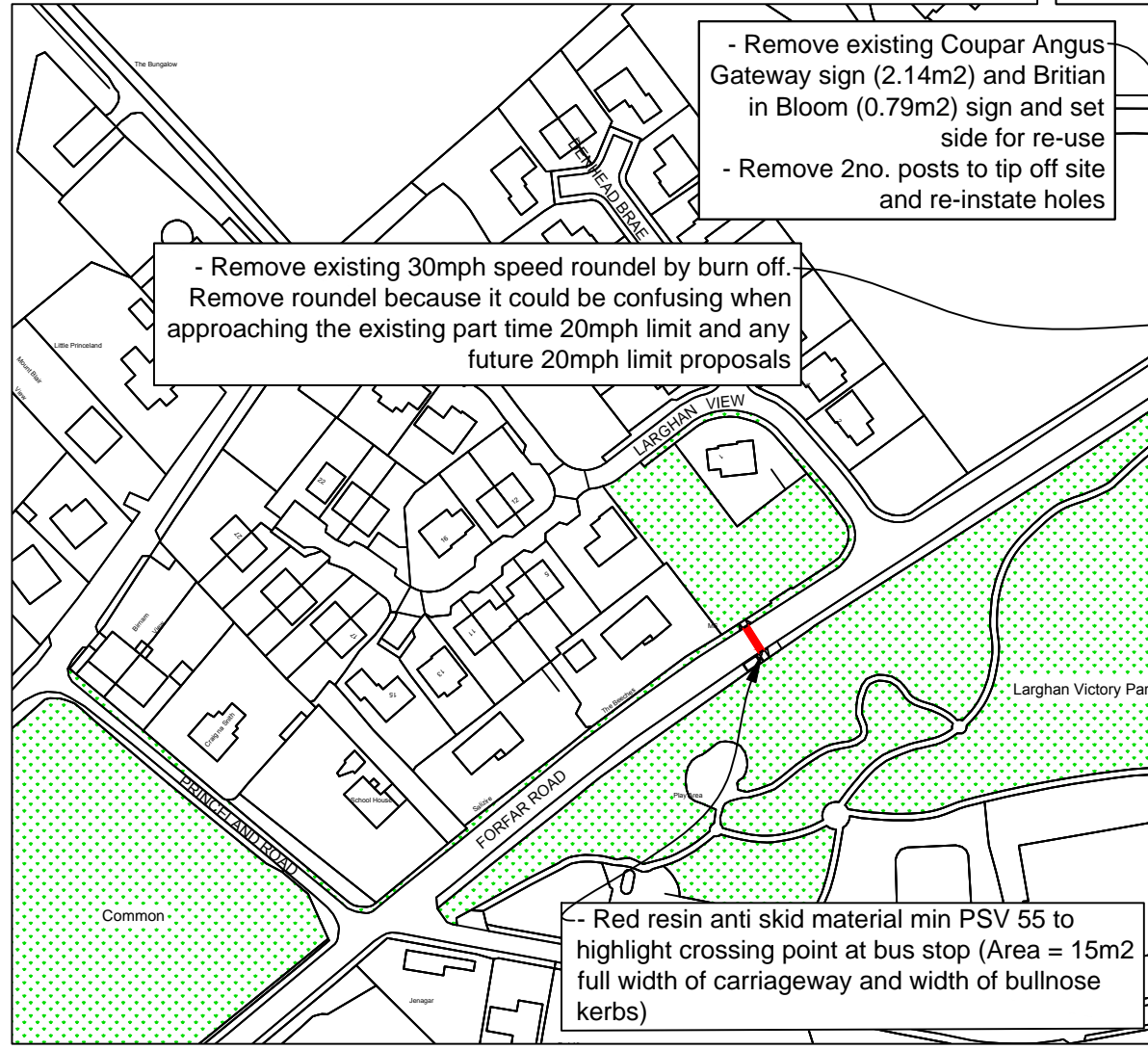
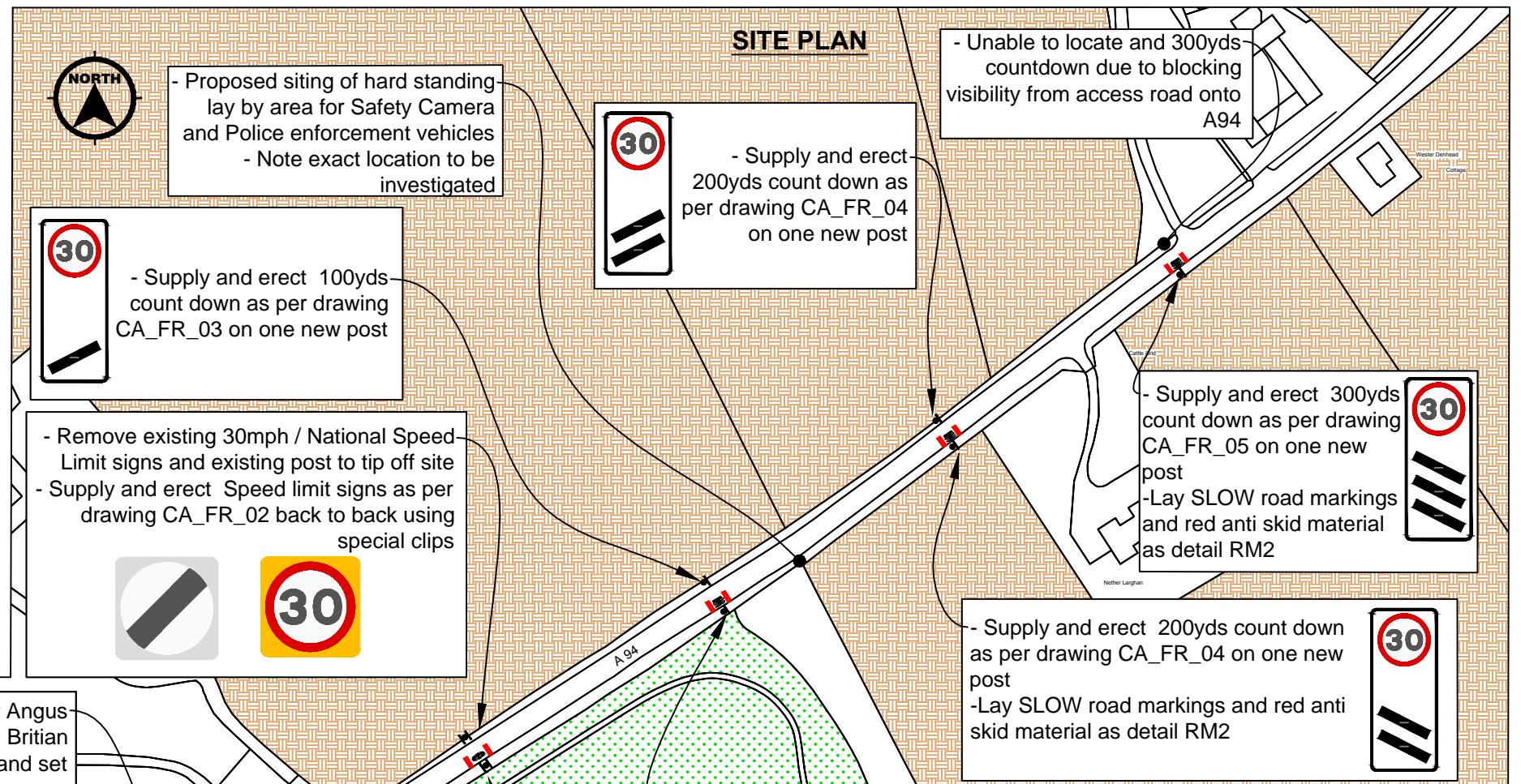
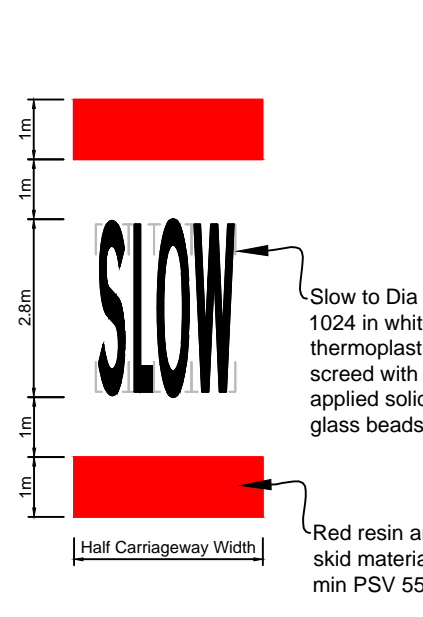


Road Marking Detail - RM1



Road Marking Detail - RM2



- Remove existing 30mph / National Speed Limit signs and existing post to tip off site

- Supply and erect Speed limit signs as per drawing CA_FR_06 back to back using special fixing clips on one new post

- Re - erect Coupar Angus Gateway sign and Britain in Bloom sign on two posts as per drawing CA_FR_06

- Lay 30mph roundel road marking and red anti skid material as detail RM1

Welcome to
Coupar Angus

Jewel of Strathmore

Seud an t-Srath Mhòir

Please drive carefully

RHS Britain in Bloom

Gold Medal Winner

- NOTES:**
1. All works shall be set out on site with the Engineer's representative.
 2. All dimensions in millimetres unless otherwise stated.
 3. Road markings shall be thermoplastic screed with applied glass beads laid to standard diagrams as detailed in The Traffic Signs Regulations and General Directions 2016 and the Traffic Signs Manual chapter 5.
 4. Traffic Signs shall be manufactured and erected in accordance with The Traffic Signs Regulations and General Directions 2016 and the Traffic Signs Manual chapters 3&4.

Suffix	Revision Details	by	Apprvd	Date
AMENDMENTS				
Coupar Angus - A94, Forfar Road				
Speed Reduction Measures				
Signage and Road Marking Proposals				
Site Plan				
 PERTH & KINROSS COUNCIL The Environment Service			Director - B.Renton BA Hons	
Drawn by:	Drawing Scales: N.T.S@A3			
Checked by:	Project Code: CA_FR			
Approved by:	Drawing No: CA_FR_01			
Date:				